

YOUR WEDDING AT
BUTLEY PRIORY





YOUR WEDDING
AT
BUTLEY PRIORY

Nestled in the wilds of the Suffolk countryside, you'll find the romantic Butley Priory, surrounded by woodland and situated just two hours from London.

Butley Priory has been standing in its magical surroundings for over 700 years, offering inspiration and wonderment to all who enter its doors.

We pride ourselves on being able to offer you a truly unforgettable experience.
Start making the memories of a lifetime...

"One of the most stunning wedding venues
in the world"
- VOGUE





DESTINATION

An exceptional boutique venue, perfect for smaller, luxury weddings or add a tipi for larger, festival-style celebrations – all expertly coordinated by the most friendly and professional team.

Stay for two nights, become a part of Butley's history and immerse yourself in the character, curiosity and peaceful surroundings of this enchanting family home.

Whatever you choose, the house, gardens and grounds are yours exclusively.





THE DAY BEFORE

Arrive in the afternoon and be welcomed by our team.
Relax, unpack and feel right at home in one of the 4
wonderfully individual bedrooms.

Three luxurious double bedrooms feature a free-standing
bathtub. The 'Monk's Cell' is a petite, single room with
views of the North terrace.

"We had the perfect day, the Priory and its grounds looked absolutely
stunning"
- Melissa & Michael





C E R E M O N Y

Butley Priory is licensed to hold civil ceremonies and partnerships for up to 100 guests.

A choice of two ceremony rooms;
the Great Hall and the Drawing room, both with
wonderful stone vaulted ceilings and stone pillars.

In fine weather, you can exchange your vows
in the peaceful surroundings of the South Garden

"You were so kind, attentive and helpful and made the day
an absolute joy for us"
- Yvette



RECEPTION

Grand or intimate, indoors or out, sophisticated or outrageous, the choice is yours!

Wedding receptions at Butley Priory are personalised at every level, fresh flowers, décor, drinks, menus, music and more can be tailored to your vision.

Capacity for dining
Great Hall - up to 80 guests
Marquee/Tipi - up to 200 guests





W E D D I N G B R E A K F A S T

An introduction to our catering team will give you the opportunity to design a bespoke menu.

You'll be expertly guided to create a delightful, seasonal and locally-sourced feast for your guests.

Vegan, vegetarian, asian-inspired...whatever your taste, the choice is yours.

We cater for all dietary requirements.

"Superbly managed, you're in safe hands and they'll help you every step of the way"
- Dominic





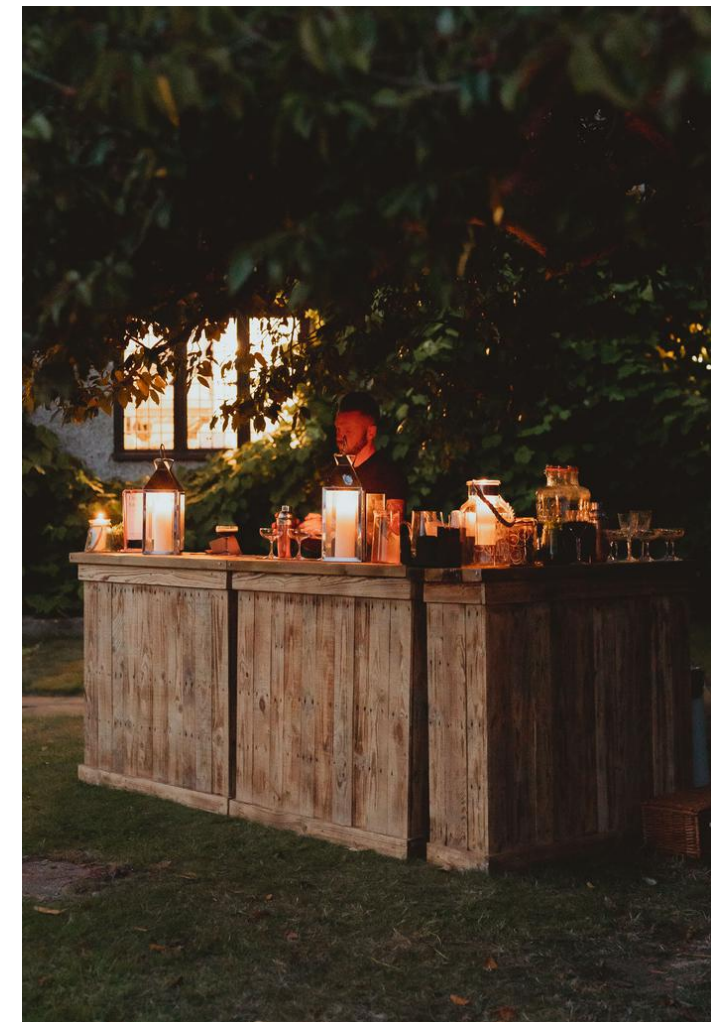
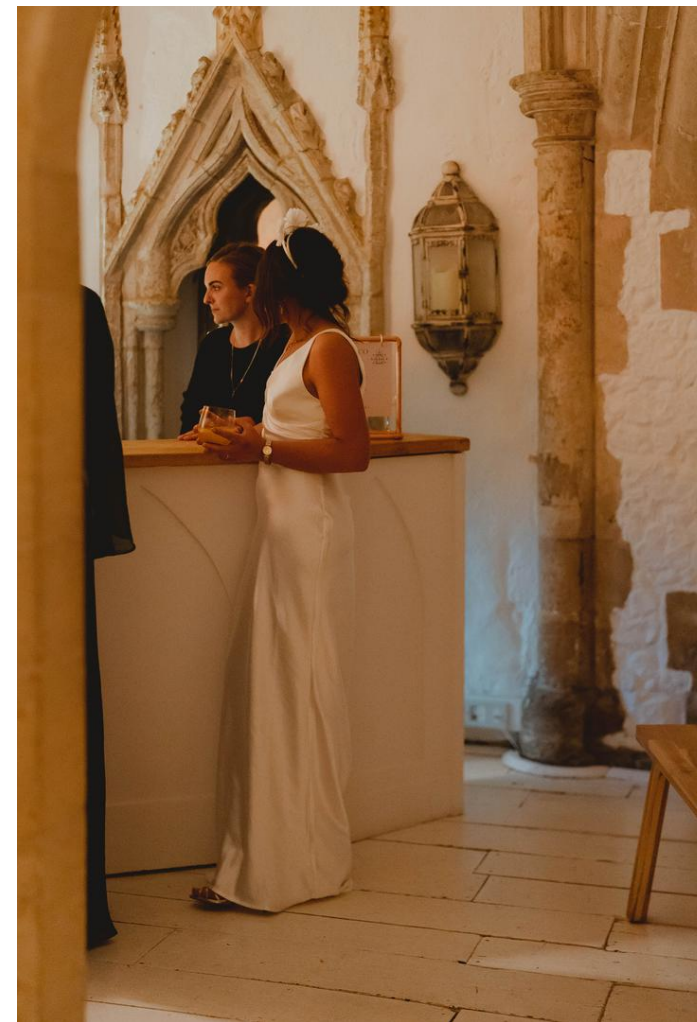
PILGRIM'S BAR

Tucked behind a panelled wall, hides our intriguing little secret bar. It's where the Augustinian monks dispensed alms and hospitality to Pilgrims on their travels. A perfect spot for our evening bar!

Featuring an extensive collection of over forty different gins, plus a wide variety of cocktails, the Butley Priory bar has earned a reputation in its own right.

Quite possibly the best room in the house.

"Thank you all again for this weekend, it was so special for us"
- Marie & Emily





THE FARMHOUSE

Just a short walk from the Priory, our luxury Georgian farmhouse sleeps twenty four guests in twelve bedrooms.

Its fine Georgian facade overlooks a large garden, tennis court and croquet lawn, with meadow and woods beyond. It has three sitting rooms, all with open fires and a large formal dining room.

Delightful and spacious, with a terrace, barbecue and firepit. A perfect place to gather the evening before your wedding.

The property is offered on a self-catering basis.

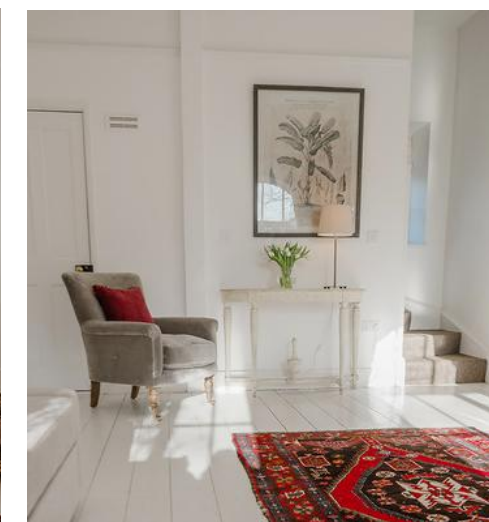


THE COTTAGE

An 18th century, charming and secluded flint cottage, once used as a stable for the Priory and later as a summerhouse, set in the Priory Gardens.

It features two double bedrooms, two bathrooms, open plan kitchen/dining room with a double sofa bed in the sitting room.

The property sleeps 4 + 2 and is offered on a self-catering basis.







CONTACT US

Say hello

To make an enquiry about holding your wedding at Butley Priory, or to arrange a private viewing, we'd love to hear from you...

Telephone

01394 450046

Email

info@butleypriory.co.uk

Website

www.butleypriory.co.uk

Address

Butley Priory, The Clumps, Woodbridge, Suffolk IP12 3NR



@butleypriory

I N F O R M A T I O N

Civil Ceremonies & Partnerships

To book a registrar, contact Woodbridge Registry Office
0345 607 2090

St. John the Baptist Church

To enquire about a church ceremony, contact Reverend Giles Tulk
01394 450610

How to find us

Whether travelling from the North or South, follow the A12 in the direction of Woodbridge. Take the A1152 towards Melton. Stay on the A1152 and turn right at the first sign for Butley Priory. Continue until you reach our private drive and follow signs for parking.

Nearest Rail Station

The closest rail station is Melton.
Woodbridge rail station has a taxi service - pre-book with M&R Cars on
01394 380034



